

Good Neighbor

*Gala*  
2019

A stylized silhouette of a city skyline at the bottom of the page, composed of various colored blocks in shades of yellow, orange, and purple.

COMMUNITY  
ACCESS

WE GRATEFULLY ACKNOWLEDGE OUR 2019 GALA LEADERSHIP

## **GALA CHAIR**

Dan Wurtzel

President

FirstService Residential New York

## **JOHN TURTURRO**

John Turturro

# HEARTFELT THANKS TO OUR SUPPORTERS\*

## CHAMPIONS

Stephen & Carol Chase  
John Turturro

Anastasia Vournas & J. William Uhrig  
Dan Wurtzel & FirstService Residential New York

## ADVOCATES

Barbara Malatesta

Alphonse Lembo & Monadnock Construction, Inc.

Adil & Nandini Nathani

## GROUNDBREAKER

Richman Housing Resources, LLC

## BUILDERS

Alembic Community Development  
Aufgang Architects  
BTQ Financial  
Capital One N.A.  
Penelope Coe  
Columbia Omnicorp  
Curry MacWilliam Janitschke

Underwriters Ltd. Cushman & Wakefield  
Martha Dabagion & Brendan Driscoll  
Carole Darden-Lloyd & Edward Lloyd  
Direct Energy Business  
Mary D'Souza  
FirstService Corporation  
Laura Gould & Lee Morakis

Maggi Knox, Annie Coe & Molly Coe  
Mary Massimo, Ph.D.  
Mego Contracting Group  
Mark Reed  
Rising Sun Construction  
David Segura  
Ramesh N. Shaw & Dena Domenicali

SLCE Architects  
Abbott & Lila Stillman  
Rana & Matthew Strazza  
Jose Vazquez  
Peter L. Wall Architect, P.C.  
Howard L. Zimmerman Architects, P.C.

## PARTNERS

BDO USA, LLP  
Citi Community Capital  
CSH (Corporation for Supportive Housing)  
CTA Architects P.C.  
Empire BlueCross BlueShield HealthPlus

Enterprise Community Partners  
Theodore & Jeanne Francavilla  
Interior Resources  
IRL Systems, Inc.  
Open Society Foundations

RingCentral  
Bradley Soto  
Urban Quotient  
USI Insurance Services

## GOOD NEIGHBORS

Ace Endico  
Aggressive Energy  
Anat Gerstein, Inc.  
BankUnited  
Braverman Greenspun, P.C.  
Bright Power  
Elise Chowdhry  
Cooper Square Committee  
Coordinated Behavioral Health (CBC)

Maureen Friar  
Sandra Gansberg & Michael Rosenblum  
Genatt V LLC  
Goldberg Weprin Finkel Goldstein LLP  
Dr. Cynthia B. Green and Lee Cohen  
Hirschen Singer & Epstein LLP  
Jennifer Jacobs and JJKO Design  
JMA Consultants Inc.  
Diane Louard-Michel

The Moinian Group  
Hedwig O'Hara  
Constance W. Packard  
Catherine Patsos  
Pearlgreen Corporation  
Seyfarth Shaw LLP  
VDA (Van Deusen & Associates)  
Phyllis Vine & Gary R. Burke, M.D.

HEARTFELT THANKS TO  
OUR SUPPORTERS

**CHAMPIONS**

Stephen & Carol Chase

John Turturro

Anastasia Vournas & J. William Uhrig

Dan Wurtzel & FirstService Residential New York

**HEARTFELT THANKS TO  
OUR SUPPORTERS**

**ADVOCATES**

Barbara Malatesta

Alphonse Lembo & Monadnock Construction, Inc.

Adil & Nandini Nathani

**GROUNDBREAKER**

Richman Housing Resources, LLC

## HEARTFELT THANKS TO OUR SUPPORTERS

### BUILDERS

Alembic Community Development  
Aufgang Architects  
BTQ Financial  
Capital One N.A.  
Penelope Coe  
Columbia Omnicorp  
Curry MacWilliam Janitschke Underwriters Ltd.  
Cushman & Wakefield  
Martha Dabagian & Brendan Driscoll  
Carole Darden-Lloyd & Edward Lloyd  
Direct Energy Business  
Mary D'Souza  
FirstService Corporation  
Laura Gould & Lee Morakis

Maggi Knox, Annie Coe & Molly Coe  
Mary Massimo, Ph.D.  
Mega Contracting Group  
Mark Reed  
Rising Sun Construction  
David Segura  
Ramesh N. Shaw & Dena Domenicali  
SLCE Architects  
Abbott & Lila Stillman  
Rana & Matthew Strazza  
Jose Vazquez  
Peter L. Woll Architect, P.C.  
Howard L. Zimmerman Architects, P.C.

# HEARTFELT THANKS TO OUR SUPPORTERS

## PARTNERS

BDO USA, LLP

Citi Community Capital

CSH (Corporation for Supportive Housing)

CTA Architects P.C.

Empire BlueCross BlueShield HealthPlus

Enterprise Community Partners

Theodore & Jeanne Francavilla

Interior Resources

IRL Systems, Inc.

Open Society Foundations

RingCentral

Bradley Soto

Urban Quotient

USI Insurance Services

# HEARTFELT THANKS TO OUR SUPPORTERS

## GOOD NEIGHBORS

Ace Endico  
Aggressive Energy  
Anat Gerstein, Inc.  
BankUnited  
Braverman Greenspun, P.C.  
Bright Power  
Elise Chowdhry  
Cooper Square Committee  
Coordinated Behavioral Health (CBC)  
Maureen Friar  
Sandra Gansberg & Michael Rosenblum  
Genatt V LLC  
Goldberg Weprin Finkel Goldstein LLP

Dr. Cynthia B. Green and Lee Cohen  
Hirschen Singer & Epstein LLP  
Jennifer Jacobs and JJKO Design  
JMA Consultants Inc.  
Diane Louard-Michel  
The Moinian Group  
Hedwig O'Hara  
Constance W. Packard  
Catherine Patsos  
Pearlgreen Corporation  
Seyfarth Shaw LLP  
VDA (Van Deusen & Associates)  
Phyllis Vine & Gary R. Burke, M.D.





**Congratulations**  
to our great friend and partner

**Steve Coe**

**on 40 years of extraordinary  
vision and leadership!**

# AUFGANG ARCHITECTS

is proud to support the Community Access  
**2019 GOOD NEIGHBOR GALA**  
and your continued efforts for people living  
with mental health concerns  
recovering from trauma and discrimination through  
affordable housing, training, advocacy,  
and healing-focused services.



follow us on instagram @ aufgang\_architects



www.btqfinancial.com

212-901-2500

info@btqfinancial.com



*Proud to Support  
Community Access  
45th Good Neighbor Gala  
and  
Congratulates!  
Mr. Steve Coe  
on 40yrs of  
Visionary Leadership!*

YOUR MISSION IS TO  
CREATE A BETTER WORLD.  
OURS IS TO HELP.

ESSENTIAL NEEDS AND SUPPORT  
FOR A BETTER LIFE, PROVIDED BY  
OUR PARTNER IN GOOD:  
**COMMUNITY ACCESS.**



See how we're helping our communities thrive  
at [capitaloneinvestingforgood.com](https://capitaloneinvestingforgood.com)





Congratulations, Steve  
From your loving family





[WWW.COLUMBIAOMNI.COM](http://WWW.COLUMBIAOMNI.COM)

**New York's Source For All  
Office Supplies, Lightbulbs,  
Art & Design, Breakroom,  
And Janitorial Needs!**



**48 West 37th Street**

**NEW YORK NY 10018**

**TEL: 212-279-6161**

**email: [sales@columbiaomni.com](mailto:sales@columbiaomni.com)**





**The Cooper Square Committee congratulates Steve Coe for his decades of outstanding leadership, pioneering supportive housing, social services and job training for people with psychiatric disabilities.**

**We are very proud to have partnered with Community Access to co-develop 29 E. 2nd Street!**



**61 East 4th Street, New York, NY 10003 :: 212.228.8210 :: [www.coopersquare.org](http://www.coopersquare.org)**

**Organizing Tenants & Building Coalitions :: Preserving Rent Stabilized Apartments :: Developing Affordable & Supportive Housing**

AT THE  
CENTER OF  
**WHAT'S  
NEXT**

Cushman & Wakefield is proud to support  
**Community Access** at the  
**45<sup>th</sup> Anniversary** of the  
**Good Neighbor Gala**

Congratulations to **Steve Coe** with  
appreciation for his outstanding  
vision and leadership over the  
past 40 years.








## Proud to support Community Access and the Good Neighbor Gala


Always working to better  
the lives of our customers  
and communities.

### Contact us for more information:



#### Robert W. Welch

Senior Sales Manager  
732.841.6582  
[robert.welch@directenergy.com](mailto:robert.welch@directenergy.com)



#### Victoria Lussier

Account Executive  
732.754.8679  
[victoria.lussier@directenergy.com](mailto:victoria.lussier@directenergy.com)



**Direct Energy.**  
Business

[directenergybusiness.com](http://directenergybusiness.com)



An Anthem Company

Congratulations to the  
**Community Access**  
**45th Anniversary**  
**Good Neighbor Gala honoree!**

**Steve Coe**, retiring CEO of Community Access, Inc.

Empire BlueCross BlueShield HealthPlus celebrates those who serve others.

[www.empireblue.com/ny](http://www.empireblue.com/ny)

Empire BlueCross BlueShield HealthPlus is the trade name of HealthPlus HP, LLC, an independent licensee of the Blue Cross and Blue Shield Association.

ENYMKT-0475-19



**FirstService**

Creating value one step at a time

We are pleased to support  
the Community Access  
45th Anniversary Good  
Neighbor Gala.

**Congratulations  
Steve Coe on 40 years  
of outstanding service**

[firstservice.com](http://firstservice.com)



Making a Difference.  
Every Day.



**FirstService**  
RESIDENTIAL

FirstService Residential  
salutes

# Community Access

for making a difference,  
every day,  
for people with  
psychiatric disabilities  
in New York City

---

FirstService Residential  
212.634.8900  
[www.fsresidential.com](http://www.fsresidential.com)



Steve,

Thank you for your unwavering dedication to the psychiatrically disabled and for helping to build Community Access into the thriving, impactful organization that it is today. We are grateful for your legacy.

*Laura Gould*




**We look at  
buildings  
from a  
different  
perspective.**

ARCHITECTURE  
MEP & STRUCTURAL ENGINEERING  
HISTORIC PRESERVATION  
FORENSIC INVESTIGATION  
SPECIAL INSPECTIONS  
ROPE ACCESS INSPECTIONS

**HLZA** HOWARD L.  
**ZIMMERMAN**  
ARCHITECTS PC

**Congratulations**  
and deepest thanks to  
**Steve Coe**  
for 40 years of  
commitment and service to  
**Community Access**  
and to all New Yorkers  
with mental health concerns

**Mary Massimo**



You have made a difference in the lives of countless people living with mental illness and addiction. You have increased the understanding of behavioral health, and successfully advocated for public policy reforms. You devoted your life to helping others worldwide.

**Kudos to you Steve**  
for an honor well-deserved.

We applaud and congratulate you on setting the bar for Lifetime Achievement so incredibly high!  
We are proud to be your friends.



[www.megagroup.nyc](http://www.megagroup.nyc)





*Congratulations to*  
**Community Access  
& Steve Coe**

**Kudos to 40 years of visionary leadership  
and pioneering programming in serving  
those with mental health concerns.**

Thank you for showing the way!



**Nandini Nathani**

Licensed Associate Real Estate Broker  
Halstead Manhattan, LLC  
408 Columbus Avenue, NY, NY 10024  
t: 212.381.2638 | [nnathani@halstead.com](mailto:nnathani@halstead.com)

**HALSTEAD**  
REAL ESTATE



# Providing Building Maintenance & Contractors' Supplies



**Easily.**



**Quickly.**



**Reliably.**



**Pearlgreen Corporation**  
*The Industrial Supply Group*

*The quality you demand. The service you expect. The technology you need.*

(914) 636-0505 | [sales@pearlgreen.com](mailto:sales@pearlgreen.com) | [www.pearlgreen.com](http://www.pearlgreen.com)



**NEW YORK'S TRUSTED TAX CREDIT EQUITY SPONSOR.**  
**Creating Partnerships to Transform Communities.**

On the occasion of the **2019 GOOD NEIGHBOR GALA**, we salute **COMMUNITY ACCESS, INC.** and particularly honoree, activist and visionary **STEVE COE** for their unwavering and ongoing efforts to advocate for those who struggle with mental health concerns.

Kevin Hoffman  
President



Moshe McKie-Krisberg  
President

800 Third Avenue, Suite 350, New York, NY 10022  
For additional information : 212-938-0499  
[TheRichmanGroup.com](http://TheRichmanGroup.com)

Brett Steinberg and RSC Group are honored to play a role in the continued building of affordable housing with Community Access and all others.

We look forward to continuing to provide Masonry work on all future projects.



# Congratulations to Steve Coe, Honoree for the Lifetime Achievement and to Community Access



910 DeKalb Avenue



Franklin Avenue Apartments



Davidson Avenue Apartments



1710 Vyse Avenue



# HEIDI KIRSCHNER

fine art

The Strazza Family is proud to support Community Access in  
changing the landscape for those who live life from all perspectives

[www.heidikirschner.com](http://www.heidikirschner.com)

**CONGRATULATIONS TO COMMUNITY ACCESS  
and  
CONGRATULATIONS TO STEVE COE  
LIFETIME ACHIEVEMENT HONOREE**

**Peter L. Woll Architect, PC**



# 45TH ANNIVERSARY GOOD NEIGHBOR GALA





anatgerstein.com | 718-793-2211

# anat.

nonprofit communications & marketing

**Congratulations to Steve Coe and Community Access!**



**AGGRESSIVE**  
energy

## POWERING MORE OF NEW YORK EVERY DAY.

*Aggressive Energy is proud to support the 44th Anniversary Good Neighbor Gala and the invaluable work of Community Access.*

AGGRESSIVE ENERGY • 718.836.9222 • [www.AggressiveEnergy.com](http://www.AggressiveEnergy.com)

# Thank You!


BankUnited is proud to support

## Community Access

for your humanitarian efforts to help those in our community.



    [www.bankunited.com](http://www.bankunited.com)

BankUnited, N.A.  
Member FDIC 

BDO USA, LLP IS PROUD TO SUPPORT  
**COMMUNITY ACCESS**

and its 45th Anniversary Good Neighbor Gala  
honoring

*Steve Coe, Lifetime Achievement Award,  
retiring CEO of Community Access Inc.*

Adam Cole, Managing Partner  
Greater New York Healthcare and Nonprofit Practice  
212-885-8327 / [acole@bdo.com](mailto:acole@bdo.com)

Ritesh Lall, Partner  
Greater New York Healthcare and Nonprofit Practice  
212-885-7337 / [rlall@bdo.com](mailto:rlall@bdo.com)

BDO USA, LLP, 100 Park Avenue, New York, NY 10017

Accountants and Advisors [www.bdo.com](http://www.bdo.com)

© 2019 BDO USA, LLP. All rights reserved.





HELPING BOARDS PUT TOGETHER  
ALL THE PIECES OF THE PUZZLE

**BRAVERMAN | GREENSPUN**

A PROFESSIONAL CORPORATION

BRAVERMAN GREENSPUN, P.C. | 110 EAST 42ND STREET, NEW YORK, NY 10017  
(212) 682-2900 | WWW.BRAVERLAW.NET



Congratulations to Community Access  
on providing 45 years of meaningful  
services and housing to New Yorkers!

Sincere thanks and congratulations to  
Steve Coe for his impactful work in his  
tenure as CEO.

Best wishes to Community Access as  
they continue to change the landscape  
of mental health and housing.

**BRIGHT POWER**  
brightpower.com





Citi congratulates Community Access on providing 45 years of leadership and dedication in the arena of mental health services and supportive housing.

[citicommunitycapital.com](http://citicommunitycapital.com)

985 BRUCKNER BLVD  
Bronx, NY  
215 units

\$42.8 Million  
Construction Loan

[Balance Sheet](#) | [Freddie Mac](#) | [Fannie Mae](#) | [Construction](#) | [Permanent](#) | [LIHTC](#)



© 2019 Citigroup Global Markets Inc. Member SIPC. All rights reserved. Citi and Arc Design is a registered service mark of Citigroup, Inc.



CBC wishes to congratulate  
Lifetime Achievement Award honoree

**Steve Coe**

for his commitment and dedication to  
improving the lives of others and for his  
steadfast commitment to the CBC Board.

Congratulations!

# Congratulations, Steve!

Thousands of New Yorkers have the platform for stability supportive housing offers because of the unwavering dedication of Steve Coe.

We are honored to recognize our nearly 30 year partnership with Steve & Community Access by sponsoring The Coe Campaign.



CTA ARCHITECTS P.C.

151 West 26<sup>th</sup> Street New York, NY 10001 | [www.ctaarchitects.com](http://www.ctaarchitects.com)

**AFFORDABLE HOUSING  
IS OUR MISSION.  
AND WE'RE IN  
IT FOR GOOD.**



For more than 35 years, we've had just one mission: to improve as many lives as possible by creating well-designed, affordable homes and connecting people to opportunity. We are in it for the long haul. We're in it for good.

Enterprise congratulates Steve Coe on an inspiring 40 years of service helping to improve the lives of New Yorkers with mental health concerns by providing critical housing and services. We wish Steve well in his retirement.

**Judith Kende**  
Vice President & Market Leader, New York  
Enterprise Community Partners, Inc.  
212.284.7186  
jkende@enterprisecommunity.org

  
[www.enterprisecommunity.org](http://www.enterprisecommunity.org)



**Our Continuing Support to Community Access on the  
Occasion of the Good Neighbor Gala**

---

GANFER SHORE LEEDS ZAUDERER LLP

360 Lexington Avenue  
New York, New York 10017  
[www.ganfershore.com](http://www.ganfershore.com)

Matthew J. Leeds  
212-922-9071  
mleeds@ganfershore.com



## Congratulations to Community Access

and best wishes to Dan Wurtzel

Michael Genatt  
Richard Genatt  
Genatt V LLC



**GOLDBERG WEPRIN FINKEL GOLDSTEIN LLP**

is proud to honor

**DANIEL WURTZEL**

**FOR HIS CONTINUING SUPPORT OF  
COMMUNITY ACCESS**

Thank you, Steve, for 41 years of service and friendship. Your wisdom and leadership have helped to shape my life.

Cynthia B. Green, Ph.D.

---

HIRSCHEN SINGER  
& EPSTEIN LLP

[hseny.com](http://hseny.com)

Hirschen Singer & Epstein LLP is proud to support

**Community Access**



902 Broadway, 13th floor New York, New York 10010 (212) 819-1130



Steve, your hard work and vision have made Community Access a clear differentiator in this space. We have always said, Community Access' buildings are head and shoulders above the rest.

Congratulations and wishing you many happy years of retirement ahead

Wishing continued Success to Community Access

From Brendan Lally & all of us at



IRL Systems, Inc.  
Fire Alarm Systems  
(718) 491-0642  
BrendanL@irlsystems.com

**interior resources**

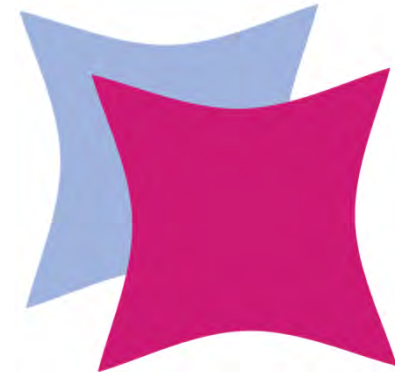
**We salute Steve Coe  
and his 40 years of  
leadership and service!**

**Contract Furniture & Design**

Bedroom • Lounge • Dining • Accessories • Office • Outdoor

Project Management • Customer Support • Design Services • Delivery & Install

(800) 397-7776  
interiorresourcesusa.com

The advertisement features a background image of a modern bedroom with a bed, a desk, and a chair. The text is overlaid on this image. The logo for Interior Resources is in the top left corner. The main headline is in a dark red font. Below it, the text "Contract Furniture & Design" is in green. A navigation bar lists various categories. At the bottom, there are four icons representing different services: a clipboard for Project Management, a speech bubble with a question mark for Customer Support, a pencil for Design Services, and a truck for Delivery & Install. The phone number and website are also listed.

CONGRATULATIONS  
**STEVE COE**

ON ALL YOUR ACCOMPLISHMENTS!

IT HAS BEEN MY PLEASURE TO WORK WITH YOU AS A GRAPHIC DESIGNER  
FOR THE PAST 10 YEARS. THE WORK YOU AND COMMUNITY ACCESS  
HAS DONE AND CONTINUES TO DO, IS TRULY INSPIRING.

-Jennifer Jacobs

jjkō design



**JMA CONSULTANTS, INC.**

Congratulations to Steve Coe on his lifetime of achievements  
and  
Thanks to Dan Wurtzel for his dedication and good works!

Eugene F. Ferrara  
President



The Moinian Group & 17 Battery Place South  
would like to congratulate

**STEVE COE**

on his **Lifetime Achievement with Community Access**

**M** MOINIAN



**WORK AS ONE**<sup>™</sup>  
One mission. One purpose. One communications platform.

[ringcentral.com](http://ringcentral.com)

**RingCentral**<sup>®</sup>



Seyfarth Shaw LLP is **delighted to support Community Access** and **applauds its work** in the **New York City** community.

Seyfarth Shaw is deeply committed to supporting the communities in which we live and work. We believe that leadership means taking the initiative to help our fellow citizens through charitable giving, community service, pro bono legal work and sustainable living.

©2018 Seyfarth Shaw LLP #URBAN11

[www.seyfarth.com](http://www.seyfarth.com)



1159 River Ave.



Bronx Town Foundry



1159 River Ave.



Harlem Dowling



142 Amsterdam Ave.

Urban Quotient is proud to support Community Access in our shared effort to strengthen communities and promote a diverse and equitable urban environment.

[www.urbanquotient.com](http://www.urbanquotient.com)  
[info@urbanquotient.com](mailto:info@urbanquotient.com)





our heartfelt congratulations to

**Steve Coe**

on his 40 years of service to Community Access

and

best of luck to Cal Hedigan in her new position as CEO.

# VDA Proudly Supports the Community Access 45th Anniversary Good Neighbor Gala



Metropolitan Museum of Art



Grand Central Terminal

## Worldwide Elevator Consultants

Contact us to see  
how we can help  
with your vertical  
transportation needs



The Plaza Hotel



ONE57

VDA (Van Deusen & Associates)  
contact@vdassoc.com  
212-868-9090 | www.vdassoc.com



# Cheers to Steve Coe, a visionary leader

Phyllis Vine and Gary Burke, M.D.



# 45TH ANNIVERSARY GOOD NEIGHBOR GALA





# BTH

BLONDIE'S TREEHOUSE INC

Proudly creating greenspaces for 40 years  
licensed landscape architecture | design | construction | installation



[www.blondiestreehouse.com](http://www.blondiestreehouse.com) | 646.649.9298



[www.centuryelevator.com](http://www.centuryelevator.com)

(718) 937-6200

CONGRATULATIONS  
TO STEVE

ENJOY YOUR  
WELL-DESERVED  
RETIREMENT

*The Lavin Family*







**PRO-TECH**  
PLUMBING AND HEATING CORP.

*Congratulations to  
all of tonight's honorees*

**PRO-TECH PLUMBING & HEATING CORP.**  
Phone: (718) 767-9067 Fax: (718) 767-9219  
www.protech-plbg.com



7001 Brush Hollow Road  
Suite 102  
Westbury, NY 11590  
516-334-5996

- ✓ IT Consulting
- ✓ Network Design, Implementation & Maintenance
- ✓ Application Development, Implementation & Training
- ✓ Support

Steve

Congratulations on  
reaching the next phase!

I remember Stanton  
Street....

Jim Weikart