

42ND ANNIVERSARY GOOD NEIGHBOR GALA



CHANGING THE
LANDSCAPE
of Mental Health & Housing

MAY 5, 2016
583 PARK AVENUE
NEW YORK, NY

We gratefully acknowledge
our 2016 gala leadership.

Chair

Dan Wurtzel

Vice Chairs

Stephen & Carol Chase
Adil & Nandini Nathani
Abbott & Lila Stillman

Committee

Laura Gould
Diane Louard-Michel
Julie Lowy
Catherine G. Patsos
Beth Zucker

PROGRAM

Welcome

Stephen H. Chase, Board President, Community Access
Dan Wurtzel, Community Access Board Member and Gala Chair

Video Presentation

Our Community

Cal Hedigan & Alysia Pascaris, Deputy CEOs

Remarks

John Turturro, Emmy Award Winner
and Friend of Community Access

Presentation of Awards

by Steve Coe, CEO

Francis Greenburger
Chairman & CEO, Time Equities, Inc.
President & Founder, Greenburger Center for
Social and Criminal Justice

Sandra Lowe, Esq.
Lifelong Champion for Social Justice

Participant Remarks

Winnie Freeman

Call for Support

DINNER SERVED

Raffle Winners Announced

HONOREE

Francis Greenburger is the founder, chairman, and chief executive officer of Time Equities, Inc., a real estate investment, development, and property management business. Founded in 1966, Time Equities holds in its portfolio more than 20 million square feet of residential, industrial, office, and retail property—including over 3,000 multi-family apartment units. Mr. Greenburger is also a champion of the arts, and founded the Omi International Arts Center, a nonprofit educational center that hosts residency programs for artists from all over the world. He is the chairman of the literary agency S.J. Greenburger Associates, and serves on the boards of several nonprofit organizations in NYC.

A staunch advocate for improving the fractured criminal justice and mental health systems, Mr. Greenburger founded the Greenburger Center for Social and Criminal Justice, which advocates for reforms to the criminal justice system by emphasizing rehabilitation rather than punishment. The Center seeks to develop alternatives to incarceration for people with mental health issues, and has eight key goals:

- Reduce prison rates
- End mandatory sentencing
- Reform outdated drug laws
- Educate and rehabilitate people
- Ban the use of solitary confinement
- Develop alternative facilities
- Keep families together
- Invest in re-entry programs

We applaud the Greenburger Center's work to build a more just and humane criminal justice system in the United States. We are inspired by Mr. Greenburger's efforts on behalf of society's most vulnerable citizens—including those with mental health concerns—and we are proud to recognize and honor him.



HONOREE

Throughout her life and career, **Sandra Lowe, Esq.**, has worked tirelessly to advance social and civil rights: as a criminal defense and civil rights lawyer; serving as the head of Governor Mario Cuomo's Office of Gay & Lesbian Concerns; and, in many different ways, over the course of 21 years as an employee of Community Access.

Sandra joined Community Access in 1995 as our Deputy Director for Program Services, and she went on to become our Community Relations Manager, a wide-ranging role that encompasses advocacy, fundraising, and supporting our Art Collective program.

Well known for her passion and persuasiveness, Sandra regularly connects with elected officials and other community stakeholders on matters relating to supportive housing and mental health. As a member of our pro bono legal committee, she also conducts weekly legal workshops at our East Village Access PROS (Personalized Recovery Oriented Services) program, during which participants discuss civics and the law.

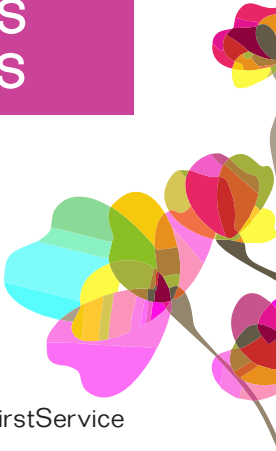
A native New Yorker, Sandra graduated from the City University of New York Law School in 1987.

The board and staff of Community Access greatly appreciate Sandra's tireless commitment to the work, mission, and values of our organization. Community Access is a better, more effective organization because of Sandra's years of service.





HEARTFELT THANKS TO OUR SPONSORS



CHAMPIONS

Stephen & Carol Chase
Anastasia Vournas & J. William Uhrig

ADVOCATES

Adil & Nandini Nathani

GROUNDBREAKERS

Martha Dabagian & Brendan Driscoll
Dunn Development Corp.
Francis Greenburger
Abbott & Lila Stillman

Dan Wurtzel & FirstService Residential
Beth & Scott Zucker

BUILDERS

Alembic Community Development
Capital One, N.A.
CMJ Underwriters Ltd.
Direct Energy Business
Laura Gould

Mary M. Massimo, Ph.D.
Richman Housing Resources LLC
Ramesh Shah & Dena Domenicali
think! architecture & design PLLC
Peter L. Woll Architect, P.C.



PARTNERS

Aggressive Heating
Chicago Title Insurance Company
Elise Chowdhry
Citi Community Capital
Columbia Omnicorp
CTA Architects, P.C.
Empire BlueCross
BlueShield HealthPlus
Enterprise Community Partners
IRL Systems, Inc.

Chris Lacovara & Sam Green
Julie & Israel Lowy
Mega Contracting Group
Monadnock Construction, Inc.
U3 Advisors
USI Insurance Services
VoiceNEXT, Inc.
Carol Whitcomb
Howard L. Zimmerman Architects



GOOD NEIGHBORS

ABBA Realty Associates
Ace Endico
BankUnited
BDO USA, LLP
Braverman Greenspun, P.C.
Laura Gentile
Goldberg Weprin Finkel
Goldstein LLP
James Golden
Dr. Cynthia B. Green & Lee Cohen
Harden + Van Arnam Architects PLLC

Hirschen Singer & Epstein LLP
JMA Consultants, Inc.
Joele Frank, Wilkinson Brimmer Katcher
JPMorgan Chase Bank, N.A.
Catherine G. Patsos
Pearlgreen Corporation
Philadelphia Insurance Companies
Planned Companies
Seyfarth Shaw LLP
Sterling National Bank
VDA



OUR STORY



Every night in New York City, more than 60,000 individuals cycle through the shelter system, including a disproportionate number of people living with mental illness. At Community Access, we believe that an affordable home and a strong support system are the keys to ending this cycle. That's why we've devoted the past four decades to building quality housing and to being a leading advocate for New Yorkers overcoming mental health concerns.

We have helped thousands of individuals and families move off the streets and out of shelters, and we provide training and education that profoundly improves people's lives and futures.

Community Access has grown from modest beginnings in the Lower East Side—our first housing programs were tenement buildings lovingly repaired by a group of our volunteer founders—to become one of the oldest and largest nonprofits in New York City dedicated to ending homelessness and to transforming systems of care for people with psychiatric disabilities.

Over time, our agency has built 18 magnificent affordable housing programs in Manhattan, Brooklyn and the Bronx that are home to more than 1,400 individuals and family members. We have created the top-ranked workforce development program for people with psychiatric disabilities, and implemented innovative counseling, self-help, crisis intervention, and support services that empower individuals to reclaim their lives. The people we help are some of New York City's most vulnerable citizens: individuals overcoming mental health concerns, individuals coming out of the shelter system and institutions, low-income working families, LGBTQ people, veterans, people living with HIV/AIDS, youth who have aged out of the foster care system, and others who have experienced trauma or abuse.

We welcome you as a partner in our ongoing work to ensure the right of all people with psychiatric disabilities to lead full and integrated lives in our community.



OUR REACH

Community Access expands opportunities for people living with mental health concerns to recover from trauma and discrimination through affordable housing, training, advocacy and healing-focused services. We are built upon the simple truth that people are experts in their own lives.

This past year, we touched the lives of nearly 10,000 New Yorkers through:

- **Housing:** 1,400 formerly homeless individuals and low-income family members housed each night in 18 apartment buildings developed in Manhattan, the Bronx and Brooklyn
- **Job Training:** 1,000 graduates of our Howie the Harp human services peer specialist job training program
- **Crisis Respite:** 100 individuals provided short-term respite in New York's first crisis respite center
- **Support Line:** 6,000 calls answered on our peer-operated support line: 646-741-HOPE
- **Recovery:** 1,000 individuals participated in our recovery and support programs

We are working diligently to help transform people's lives and make New York City better for everyone — and we can't do this without you.

- **Make a contribution to help end homelessness in NYC:** communityaccess.org/donate
- **Join the conversation online:** facebook.com/communityaccess
- **Come visit us:** We are happy to schedule tours and host receptions at any of our 20 locations around the city.

OUR FUTURE



Community Access' planned giving program offers an exceptional opportunity for caring neighbors to invest in our future through:

1. Wills and bequests
2. Charitable remainder trusts
3. Gifts of life insurance
4. Donations of appreciated assets, e.g. stocks and real estate

We encourage you to connect with us to discuss planned gift options that are right for you and your loved ones. If you have already included Community Access in your estate planning, please call us so that we may recognize your support.

John Williams, Director of Development & Communications
(212) 780-1400, ext. 7772
jwilliams@communityaccess.org



BOARD OF DIRECTORS

Stephen H. Chase, President
Catherine G. Patsos, Vice President
Elise Chowdhry, Treasurer
Mary M. Massimo, Ph.D., Secretary

Martha Dabagian
Theodore S. Francavilla
James Golden
Laura Gould, LCSW
Dr. Cynthia B. Green

Philipp Hecker
Diane Louard-Michel
Julie Lowy
Barbara Malatesta

Adil Nathani
Ramesh Shah
Abbott Stillman
Carol Whitcomb
Dan Wurtzel

Strategic Advisors to the Board

David Kuperberg
Anastasia P. Vournas

CHIEF EXECUTIVE OFFICER

Steve Coe

communityaccess.org



© Community Access, Inc.

2 Washington Street, 9th Floor, New York, NY 10004
(212) 780-1400