

**40** Years of Housing,  
Health and Human  
Rights



**Good Neighbor Gala**  
at the United Nations  
May 8, 2014

# 40th Anniversary Good Neighbor Gala

## **GALA “AMBASSADORS”**

### **Chair**

Stephen H. Chase

### **Vice Chairs**

Sandra Gansberg

Oliver Aldon James

David Kuperberg

Adil Nathani

Abbott Stillman

Anastasia P. Vournas

# **EVENING ITINERARY**

## **Cocktail Reception**

### **Program**

#### **Welcome**

Stephen H. Chase, Board President, Community Access

Steve Coe, CEO, Community Access

Jan Alblas, Director, Pameijer, The Netherlands

#### **Featured Speaker**

Ivan Šimonović

United Nations Assistant Secretary-General  
for Human Rights

#### **Participant Remarks**

Olivia Moishe

Leticia Rodriguez

#### **Call for Support**

#### **Dinner Served**

#### **Facebook Rally**

#### **Closing**

## GALA SPONSORS

### Champions

Stephen & Carol Chase  
Barbara Malatesta

Anastasia P. Vournas & J. William Uhrig  
Anonymous

### Advocates

Alembic Community Development & the DARMA Fund  
David Kuperberg & FirstService Residential  
Anonymous

### Groundbreakers

Capital One Commercial Banking  
Mary M. Massimo, Ph.D.  
Ramesh Shah & Dena Domenicali

### Builders

JPMorgan Chase  
Direct Energy  
National Equity Fund &  
Local Initiatives Support Corporation

Adil & Nandini Nathani  
Richman Housing Resources LLC  
Lila & Abbott Stillman  
Peter L. Woll Architect, P.C.

### Partners

Aggressive Energy & Mechanical Group  
Bank of America Merrill Lynch  
BTQ Financial  
Steve Coe & Maggi Knox  
Concern for Independent Living  
CTA Architects P.C.  
Datis  
Dunn Development Corp.  
Theodore Francavilla

Sandra Gansberg  
HealthPlus Amerigroup  
HLS Builders Corp.  
IRL Systems, Inc.  
Julie & Israel Lowy  
Mega Contracting  
Mitofsky Shapiro Neville & Hazen LLP  
USI Insurance Services  
Carol A. Whitcomb

### Good Neighbors

Ace Endico  
BDO USA, LLP  
Chicago Title Insurance Company  
Elise Chowdhry  
CSH  
EnTech Digital Controls, Inc.  
Federal Home Loan Bank of New York  
Goldberg Weprin Finkel Goldstein LLP  
James Golden

Dr. Cynthia B. Green & Lee Cohen  
Philipp Hecker  
Interior Resources, Inc.  
JAD Corporation of America  
Newmark Grubb Knight Frank  
Pearlgreen Corporation  
Philadelphia Insurance Companies  
SLCE Architects  
Howard L. Zimmerman Architects, P.C.

Heartfelt Thanks to Our 40th Anniversary  
Good Neighbor Gala Sponsors

## Champions

Stephen & Carol Chase  
Barbara Malatesta

Anastasia P. Vournas & J. William Uhrig  
Anonymous

Heartfelt Thanks to Our 40th Anniversary  
Good Neighbor Gala Sponsors

## Advocates

Alembic Community Development  
& the DARMA Fund

David Kuperberg & FirstService Residential  
Anonymous

Heartfelt Thanks to Our 40th Anniversary  
Good Neighbor Gala Sponsors

## Groundbreakers

Capital One Commerical Bank  
Mary M. Massimo, Ph.D.  
Ramesh Shah & Dena Domenicali

Heartfelt Thanks to Our 40th Anniversary  
Good Neighbor Gala Sponsors

## Builders

Direct Energy  
JPMorgan Chase  
Adil & Nandini Nathani  
National Equity Fund &  
Local Initiatives Support Corporation  
Richman Housing Resources LLC  
Lila & Abbott Stillman  
Peter L. Woll Architect, P.C.



Heartfelt Thanks to Our 40th Anniversary  
Good Neighbor Gala Sponsors

## Partners

Aggressive Energy & Mechanical Group

Bank of America Merrill Lynch

BTQ Financial

Steve Coe & Maggi Knox

Concern for Independent Living

CTA Architects P.C.

Datis

Dunn Development Corp.

Theodore Francavilla

Sandra Gansberg

HealthPlus Amerigroup

HLS Builders Corp.

IRL Systems, Inc.

Julie & Israel Lowy

Mega Contracting

Mitofsky Shapiro Neville & Hazen LLP

USI Insurance Services

Carol A. Whitcomb

**Heartfelt Thanks to Our 40th Anniversary  
Good Neighbor Gala Sponsors**

# Good Neighbors

Ace Endico

BDO USA, LLP

Chicago Title Insurance Company

Elise Chowdhry

CSH

EnTech Digital Controls, Inc.

Federal Home Loan Bank of New York

Goldberg Weprin Finkel Goldstein LLP

James Golden

Dr. Cynthia B. Green & Lee Cohen

Philipp Hecker

Interior Resources, Inc.

JAD Corporation of America

Newmark Grubb Knight Frank

Pearlgreen Corporation

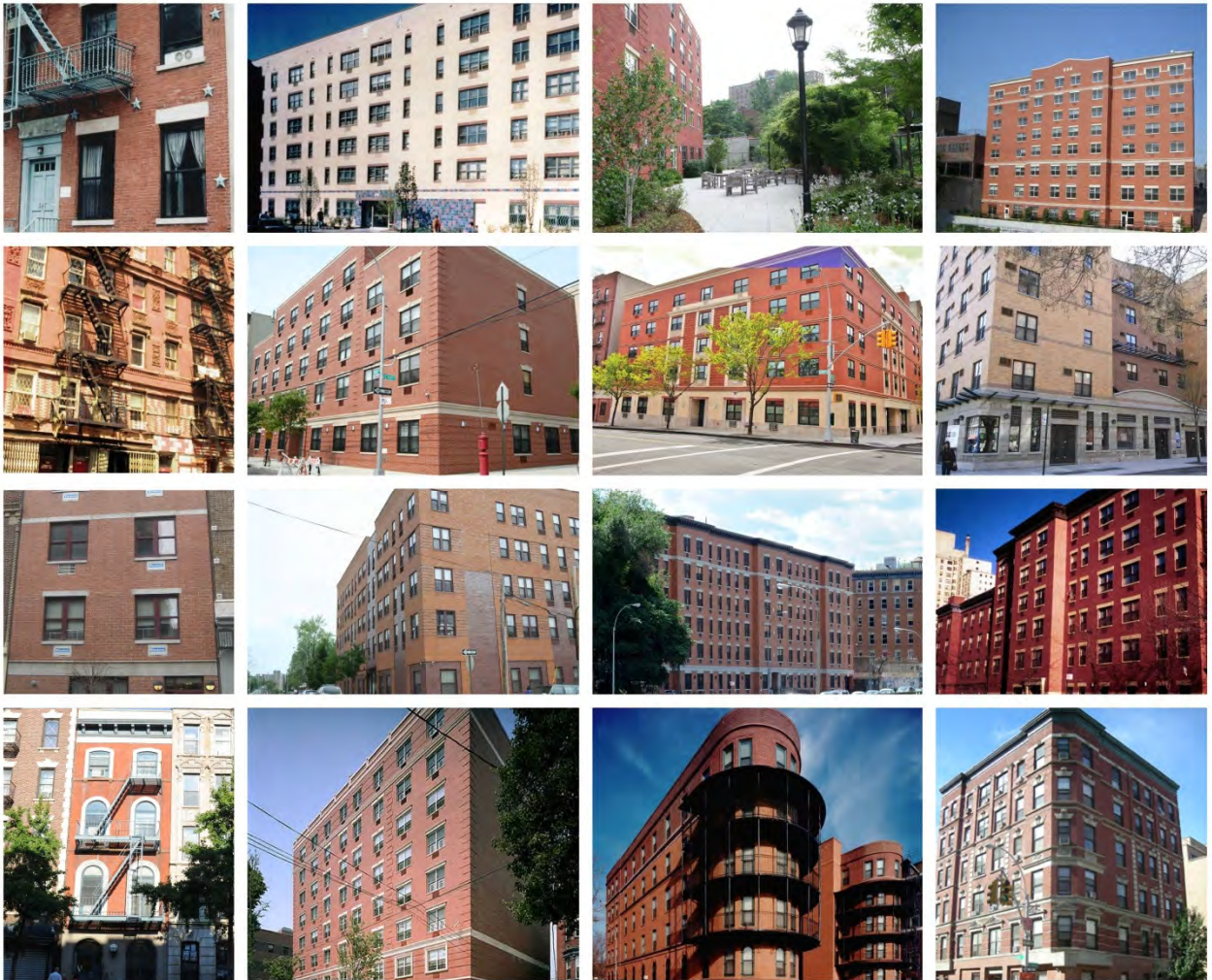
Philadelphia Insurance Companies

SLCE Architects

Howard L. Zimmerman Architects, P.C.



# 40 YEARS OF HOUSING, HEALTH AND HUMAN RIGHTS



# KEEP UP THE GOOD WORK



ARNOLD ADLIN  
PRINCIPAL  
BERNSTEIN GLOBAL WEALTH MANAGEMENT

1345 AVENUE OF THE AMERICAS  
NEW YORK, NEW YORK 10105  
212.756.4046  
WWW.BERNSTEIN.COM





# Aggressive Energy committed to energy committed to NYC

At Aggressive Energy, we're striving to power New York with affordable fuel oil, biofuels, natural gas and electricity. In addition to our competitive prices, we're committed to our customers and have been offering reliable energy service for more than 30 years. As a leading energy supplier in New York, we promise to uphold our premium service while doing what's right for our environment and our economy.

We keep New York in the comfort zone.



Bill Jebaily  
Bill@aggressiveny.com  
718.836.9222

Fairfax duPont  
Fairfax@aggressiveny.com  
917.701.1221

[aggressiveny.com](http://aggressiveny.com)

*“Heal. Good dog.”*

Pets often matter a lot to people with psychiatric disabilities.



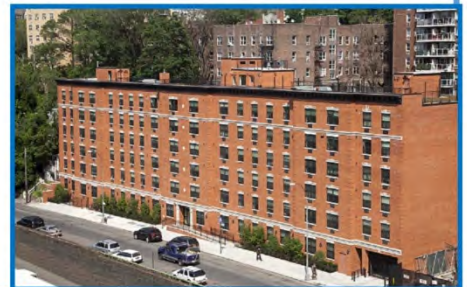
P  
E  
T  
  
A  
C  
C  
E  
S  
S



# **alem**bic

COMMUNITY DEVELOPMENT

**Congratulates**  
**Community Access**  
on the occasion of its  
**Good Neighbor Gala**  
commemorating  
**40 years**  
of  
**Housing, Health and Human**  
**Rights**  
and joins in recognizing the  
**U.N. Convention on the Rights of**  
**Persons with Disabilities**

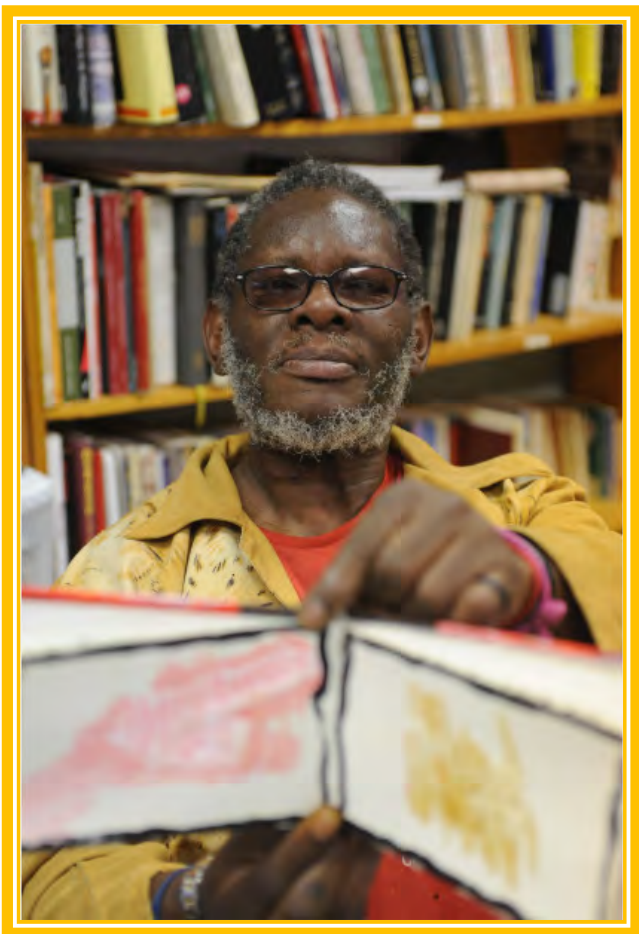




**Direct  
Energy™**  
**Business**



# THE ART COLLECTIVE



Congratulations to



for 40 years of  
Housing Health and Human Rights



Dekalb Avenue, Brooklyn



Davidson Avenue, Bronx



Vyse Avenue, Bronx



Franklin Avenue, Bronx

**SLCE** *Architects*

1359 Broadway  
New York, NY  
10018



**In Manhattan, CA offers homes to over 400 individuals and families, including at our beautifully restored Gouverneur Court building in the Lower East Side.**



Congratulations to Carla Rabinowitz, William Mojica and Community Access for your advocacy efforts:

- Crisis Intervention Teams
- Legislative Day
- NYC Mental Health Film Festival

You are transforming NYC and saving people's lives.



**Congratulations Community Access on  
Your Milestone 40th Anniversary.**



**Thank you for your business and your ongoing support.**

**John Shannon at 877-852-0784  
or visit [butlerwoodcrafters.com](http://butlerwoodcrafters.com)**

**Butler**  
WOODCRAFTERS  
*Furniture Solutions*

**Building a Better  
Tomorrow.**

Chase is proud to sponsor the Good Neighbor Gala and we applaud Community Access' four decades of leadership.

**For more information on Chase  
Community Development Banking  
please contact:**

**David Walsh  
(212) 270-2943**

**Susan Hyman  
(212) 270-2931**

**CHASE** 



© 2014 JPMorgan Chase & Co. All rights reserved. PA\_14\_179



Community Access houses nearly 1,500 individuals and families in 20 buildings throughout Manhattan, Brooklyn, and the Bronx. Our crisis respite center, pictured here, is among our newest initiatives – offering a home-like alternative to emergency hospitalization, it's the first of its kind in NYC.



Congratulations to Kurt Sass and the  
Pet Access Committee for helping  
tenants adopt rescue animals and bring  
them into their lives.





Extraordinary things happen when you have great partners.

LISC and National Equity Fund® are proud to work with Community Access to create opportunities for individuals, families and communities.



Tony Lyons | National Equity Fund® | [tlyons@nefinc.org](mailto:tlyons@nefinc.org) | 212.455.9323  
Arturo Suarez | LISC NYC | [asuarez@lisc.org](mailto:asuarez@lisc.org) | 212.455.1606

## Congratulations to Community Access for Forty Years of Service

Peter L. Woll Architect, PC





**In Brooklyn,  
over 100 individuals  
are a part of our  
community, including  
tenants at our Dekalb  
Avenue building.**



***Congratulations** to Citizens Housing and Planning Counsel, Ismene Speliotis, Laura Jervis and all of CHPC's distinguished honorees.*



**R**ICHMAN  
**H**OUSING  
RESOURCES LLC

GREENWICH 800.333.3509  
NEW YORK 212.938.0499  
THERICHMANGROUP.COM

**THANK YOU** for your enduring commitment and your innovative policy solutions for creating affordable housing. Working together, we can transform people's lives and the communities in which they live.

**Capital One**  
Commercial Banking

# CELEBRATING YOUR COMMITMENT

Capital One is proud to join in celebrating 40 years of housing, health and human rights, and supports Community Access in its mission to assist people with psychiatric disabilities in transitioning from shelters and institutions to independent living

[www.capitalonebank.com/commercial](http://www.capitalonebank.com/commercial)

MEMBER  
FDIC

Products and services offered by Capital One, N.A., Member FDIC. © 2014 Capital One. Capital One is a federally registered service mark. All rights reserved.



Leticia Rodriguez and her two daughters on the roof of 258



“I’m proud of what I’ve accomplished...getting out of the shelter system and now working as an advocate to help other people in shelters.”

THANK YOU



for improving the lives of our community.



Provider of Human Capital Management &  
Payroll Software to Community Access.

[info@datis.com](mailto:info@datis.com) | 1.877.386.1355 | [www.datis.com](http://www.datis.com)

Making a Difference.  
Every Day.



FirstService Residential  
salutes

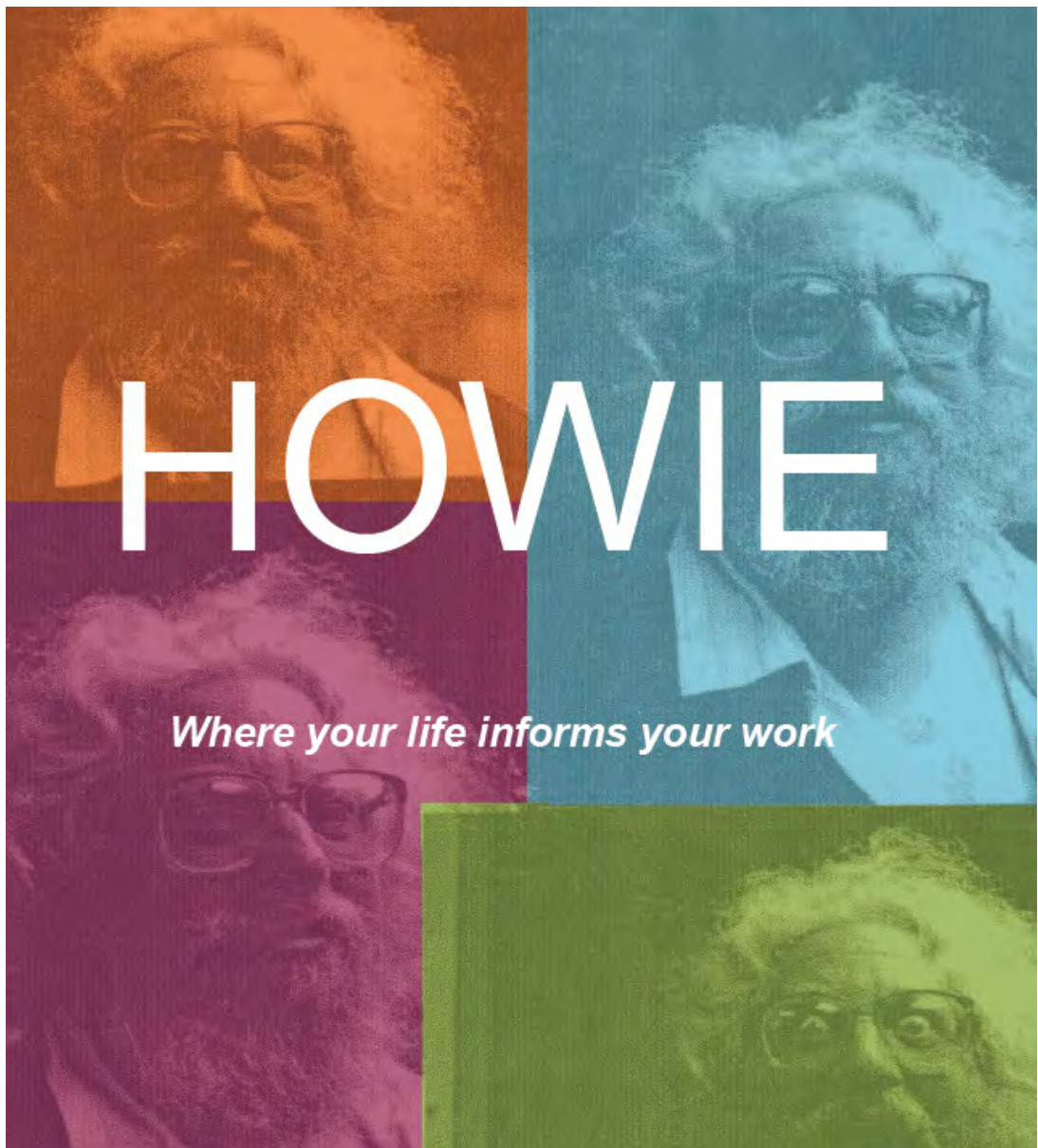
**Community Access**

*for 40 years of  
making a difference  
for people with  
psychiatric disabilities  
in New York City*

---

**FirstService Residential**  
212.634.8900  
[www.fsresidential.com](http://www.fsresidential.com)

Congratulations to Lynnae  
Brown and her team for  
their fantastic work at  
Howie the Harp.





### Foodservice has a new identity.

AceEndico is a new experience in Foodservice. We are a broadline distributor and our HACCP approved, State-of-the Art 150,000 square foot facility boasts the latest in technology and efficiency which translates directly into impeccable product and dedicated service. With 10,000+ products in our inventory, our diversity stretches across the full culinary spectrum, from Specialty Ingredients to beverages, breakfast foods, pasta, cheeses, fresh fruits and vegetables, to center of plate meats and seafood. We also carry a complete range of equipment, catering and cleaning supplies. In addition to our expansive product range, personalized service and continuous support, we have instituted many Green initiatives to better serve our community, our environment and our world.

[AceEndico.com](http://AceEndico.com)

PLACE YOUR ORDER. 914/347-3131 212/517-3035

# B BANDES CONSTRUCTION COMPANY INC.

Proud to Support  
Community Access 40th  
Anniversary

Bank of America Merrill Lynch is  
honored to join in supporting  
your critical efforts.

**Bank of America  
Merrill Lynch**

[www.bdo.com](http://www.bdo.com)

(212) 885-8000

WE ARE PROUD TO SUPPORT  
COMMUNITY ACCESS, INC.

**BDO USA, LLP**

ACCOUNTANTS & CONSULTANTS  
CHRISTOPHER J. ORELLA, CPA, PARTNER

100 PARK AVENUE

NEW YORK, NY 10017

**BDO**

N  
E  
I  
G  
H  
B  
O  
R  
S



F  
R  
I  
E  
N  
D  
S



F  
A  
M  
I  
L  
Y



BTQ Financial is delighted to support  
and celebrate the Community Access  
40th Anniversary  
Good Neighbor Gala.

BTQ Financial is a national leader in providing financial and accounting outsourcing  
solutions to the nonprofit sector.

*Your Mission is to Create a Better World. Ours is to Help.*  
[www.btqfinancial.com](http://www.btqfinancial.com)



312 Expressway Drive South

Medford, New York 11763

(631) 758-0474 phone

(631) 758-0467 fax

[www.concernhousing.org](http://www.concernhousing.org)

**CHICAGO TITLE INSURANCE COMPANY**

IS PROUD TO SUPPORT

**Community Access**

AND JOINS COMMUNITY ACCESS IN CELEBRATING ITS

**40<sup>th</sup> Anniversary Good Neighbor  
Gala**

Neil A. Falcone & Your Friends at



**CHICAGO TITLE  
INSURANCE COMPANY**

711 Third Avenue, New York, New York  
Neil.Falcone@cti.com Telephone (212) 880-1484



**CSH**

The Source for  
Housing Solutions

**212-986-2966**

**[csh.org/ny](http://csh.org/ny)**





CTA ARCHITECTS P.C.  
WWW.CTAARCHITECTS.COM

CONGRATULATIONS!

**ENTECH** 

DIGITAL CONTROLS

Control • Monitor • Conserve • Save

[www.entechdigital.com](http://www.entechdigital.com)



We salute the  
**COMMUNITY ACCESS  
40<sup>TH</sup> ANNIVERSARY  
GOOD NEIGHBOR GALA**



[WWW.FHLBNY.COM](http://WWW.FHLBNY.COM)



Congratulations to tonight's Honoree and our Leaders:

Ivan Šimonović  
Stephen H. Chase  
Steve Coe

Thank you for all you do for Community Access

You are true humanitarians and Good Neighbors!

From Cindy Green and Lee Cohen

# HLS BUILDERS CORP.

New York State-Sponsored

**Free or Low-Cost  
Health Insurance**



1-888-809-8009 (TTY 1-800-855-2880)  
[healthplus.amerigroup.com](http://healthplus.amerigroup.com)



For more information about Medicaid Managed Care, call New York Medicaid Choice at 1-800-505-5678. For more information about Child Health Plus and Medicaid, call New York Health Options at 1-800-541-2831. To learn more about signing up for a health plan through NY State of Health, visit [mystateofhealth.ny.gov](http://mystateofhealth.ny.gov) or call 1-855-355-5777. Some children who had employer-based health insurance within the past six months may be subject to a waiting period before they can enroll in Child Health Plus. This will depend on your household income and the reason your children lost employer-based coverage.

**GOLDBERG WEPRIN FINKEL GOLDSTEIN LLP**

**is proud to honor our friend**

**DAVID KUPERBERG**

**FOR HIS CONTINUING SUPPORT OF  
COMMUNITY ACCESS**

# INTERIOR RESOURCES

Contract Furniture & Design

Proudly supports  in helping to build homes, hopes and futures for New Yorkers overcoming mental illness and homelessness.

[interiorresourcesusa.com](http://interiorresourcesusa.com)  
800-397-7776

Jack Jaffa & Associates  
turns New York City properties

## GREEN



New York City's property owners know the color of money but too many let violation mismanagement eat into their profits. With our state-of-the-art software, property owners and managers can track every aspect of their property's compliance and can have our in-house team of violation removal experts seamlessly manage and remove your fines. Less headaches. More dollars. Trust Jack Jaffa & Associates to do it right.

**VIOLATION REMOVALS • TAX INCENTIVES • VIOLATION ALERT SOFTWARE  
COST SEGREGATION • ONLINE RENT PAYMENTS • LEAD TESTING**

147 Prince Street • Brooklyn, NY 11201 • 718.855.6110 • [www.jackjaffa.com](http://www.jackjaffa.com)



Jack Jaffa  
& Associates

## Continued Success to Community Access

From all of us at



Fire Alarm ~ Card Access  
CCTV ~ Security Systems  
(718) 491-0642

## Congratulations Community Access on the 40th Good Neighbor Gala

Just Ask JAD for answers to all things janitorial:  
Solutions. Savings. Seminars. Products. Conservation.

**JAD**  
BUILDING MAINTENANCE SUPPLIES



JAD Corporation of America / [www.jad.com](http://www.jad.com) / (800) JAD-2247  
20-48 119th Street College Point, NY 11356 Just Ask JAD.





OFFICE 201-816-0448  
CELL 917-647-2878  
FAX 201-816-0558

## JMA CONSULTANTS, INC.

d/b/a JMA OF NEW JERSEY IN N.Y.  
JMA Consultants, Inc., NJ Authorization to do Engineering No. 24GA27941400  
AFFILIATED WITH JMA CONSULTANTS AND ENGINEERS P.C.  
gene@jmabuildings.com - E-MAIL

EUGENE F. FERRARA  
PRESIDENT

580 SYLVAN AVENUE - SUITE 1L  
ENGLEWOOD CLIFFS, NJ 07632

**JOELE**  
**FRANK**

JOELE FRANK | WILKINSON | BRIMMER | KATCHER

622 Third Avenue, 36th Floor, New York, NY 10017



## A ROUND OF APPLAUSE.

We proudly support

**Community Access**

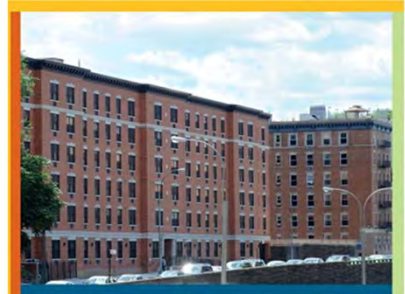
and its commitment to  
**40 Years of Housing, Health  
and Human Rights**

**Newmark Grubb  
Knight Frank**

Congratulations to  
**Community Access**  
on the occasion of the  
**40<sup>th</sup> Anniversary Celebration**  
and in tribute to our good friend  
**Steve Chase**  
in recognition of his **28** years of  
service as a Board Member and  
**10** years as Board President  
Shirley & Ping Kiang



In the Bronx, nearly 500 people are tenants of Community Access, including at our national award winning Cedar Avenue Apartments.



Congratulations  
to Community Access  
on celebrating 40 years of success



COMMITTED TO BUILDING  
QUALITY HOUSING FOR EVERY NEED

Bill Neville  
and  
Mitofsky Shapiro  
Neville & Hazen LLP  
congratulate  
Steve Coe  
and  
Community Access  
for 40 years of providing  
outstanding housing and services  
to needy New Yorkers.

#### Price, Quality, Service... Since 1934

Pearlgreen Corporation, a family owned and operated building maintenance and contractor supply company, has been serving the New York City tri-state area for over 75 years. Founded in 1934 by Irving Greenberg along with his wife Pearl, the company is now in its third generation, having undergone significant change through organic growth, acquisition, and physical expansion. Throughout these changes, Pearlgreen's commitment to unparalleled service, product quality, and competitive pricing continues to be our business model and the cornerstone of our success.



Our founders, Pearl and Irving Greenberg



Pearlgreen in 2005

Pearlgreen in 1951

Pearlgreen in 2010

#### Why Select Pearlgreen?

Operating out of our state-of-the-art 110,000 square foot distribution center, Pearlgreen is your single supply source for over 15,000 products from over 400 quality manufacturers. Our 15 member truck fleet with GPS tracking and complete computerization of our operation enable us to provide prompt next day delivery. Pearlgreen's experienced and knowledgeable customer service department is open Monday thru Saturday and our e-commerce website offers the convenience of placing orders online. Pearlgreen's devotion to superior service and attention to our customers needs are our primary goals as we continue on in the tradition of our founders and move forward into the future.



**Pearlgreen Corporation**  
*The Industrial Supply Group*

30 Pine Street New Rochelle, NY 10801  
Tel: (914) 636-0505 Fax: (914) 636-8951  
[www.pearlgreen.com](http://www.pearlgreen.com) | [sales@pearlgreen.com](mailto:sales@pearlgreen.com)



Proudly support the  
Community Access Gala

*Wishing you continued  
success throughout 2014!*



**PHILADELPHIA**  
INSURANCE COMPANIES

A Member of the Tokio Marine Group

866.381.0418 | **PHLY.com**

**PRO-TECH**  
PLUMBING AND HEATING CORP.

*congratulates*



*on their  
continuous good work*

**Dr. Robert J. Stillman  
and**

**Dr. Linda K. Stillman  
congratulate**

**Community Access**

**on 40 years of stunning success  
and are proud of the efforts of its  
Good Neighbor Gala Vice Chair,  
Abbott Stillman**

For Abbott Stillman

Thank you for the wonderful relationship between our families.  
We honor you and your many good works.

Harriet & Jack Izower

Marilyn and Jeff Sheldon



7001 Brush Hollow Road  
Suite 212  
Westbury, NY 11590  
516-334-5996

- ✓ IT Consulting
- ✓ Network Design, Implementation & Maintenance
- ✓ Application Development, Implementation & Training
- ✓ Support

K. Backus & Associates  
is now



We are proud to continue  
to support  
Community Access

[WWW.U3ADVISORS.COM](http://WWW.U3ADVISORS.COM)  
PHILADELPHIA | NEW YORK | DETROIT



HOWARD L.  
**ZIMMERMAN**  
ARCHITECTS PC

---

Exterior Restoration | Historic Preservation  
Forensic Investigation | Mechanical Engineering